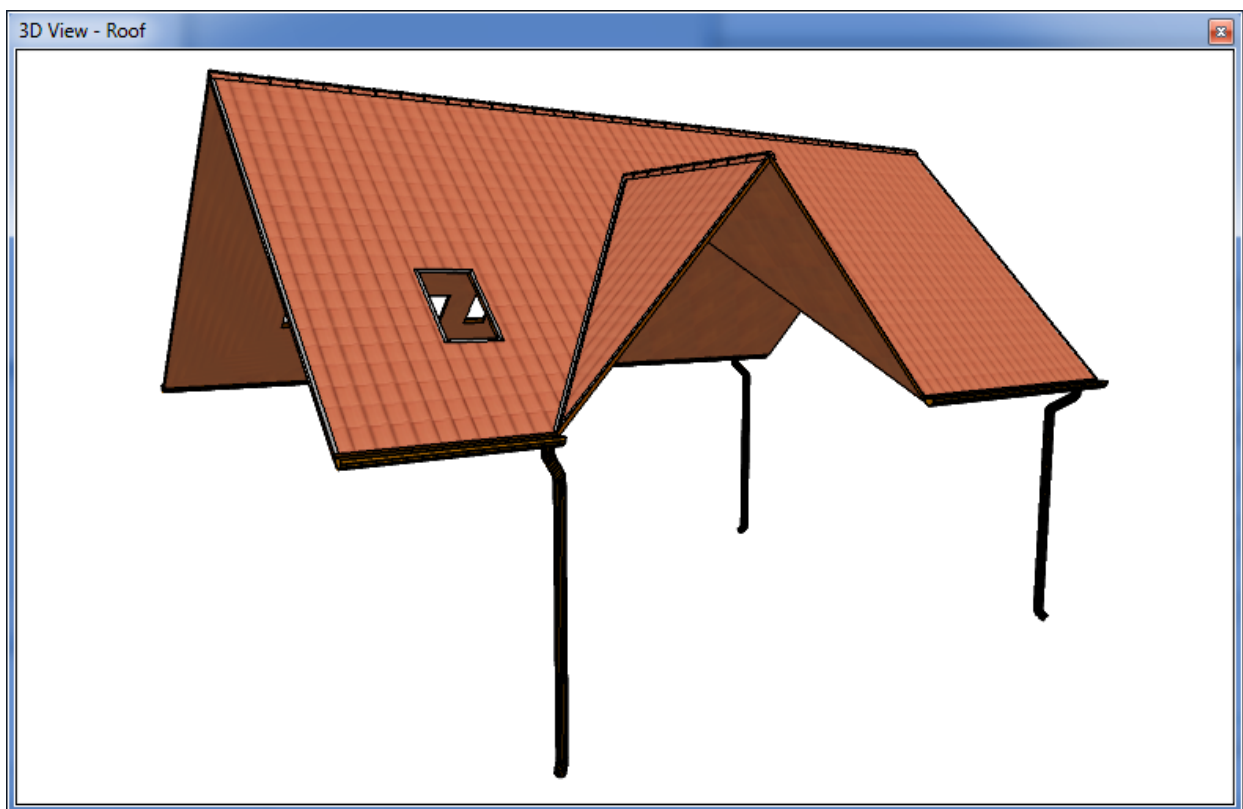


Roof Designer

User's Guide



DesignSoft

END-USER LICENSE AGREEMENT FOR DESIGNSOFT SOFTWARE

IMPORTANT-READ CAREFULLY: This DesignSoft End-User License Agreement ("Agreement") is a legal agreement between you (either an individual or a single entity) and DesignSoft Corporation for the DesignSoft software accompanying this Agreement, which includes computer software and associated media and printed materials, and may include "online" or electronic documentation ("SOFTWARE PRODUCT" or "SOFTWARE"). By opening the sealed packet or by downloading or installing the SOFTWARE PRODUCT or exercising your rights to make and use copies of the SOFTWARE PRODUCT, you agree to be bound by the terms of this Agreement. If you do not agree to the terms of this Agreement, promptly return this package to the place from which you obtained it, or in case of a download, delete the downloaded file(s) and uninstall the product from your computer(s).

SOFTWARE PRODUCT LICENSE

The SOFTWARE PRODUCT is protected by copyright laws and international copyright treaties, as well as other intellectual property laws and treaties. The SOFTWARE PRODUCT is licensed, not sold.

1. GRANT OF LICENSE. DesignSoft grants to you a nonexclusive right to use the SOFTWARE PRODUCT on a single computer unless otherwise indicated on the invoice accompanying this product. You must pay for additional copies of the software if more than one copy will or may be running at the same time on one or more computers. You may not rent, sell, lease, sub-license, time-share or loan the software to others.

2. COPYRIGHT. All title and copyrights in and to the SOFTWARE PRODUCT (including but not limited to any images, photographs, animations, video, audio, music, text, and "applets," incorporated into the SOFTWARE PRODUCT), the accompanying printed materials, and any copies of the SOFTWARE PRODUCT, are owned by DesignSoft or its suppliers. The SOFTWARE PRODUCT is protected by copyright laws and international treaty provisions. Therefore, you must treat the SOFTWARE PRODUCT like any other copyrighted material except that you may either (a) make one copy of the SOFTWARE PRODUCT solely for backup or archival purposes, or (b) install the SOFTWARE PRODUCT on a single computer (except as described in section 1) provided you keep the original solely for backup or archival purposes,.

3. OTHER RESTRICTIONS. This Agreement is your proof of license to exercise the rights granted herein and must be retained by you. You may not reverse engineer, decompile, or disassemble the SOFTWARE PRODUCT, except and only to the extent that such activity is expressly permitted by applicable law notwithstanding this limitation.

LIMITED WARRANTY NO WARRANTIES. DesignSoft expressly disclaims any warranty for the SOFTWARE PRODUCT. The SOFTWARE PRODUCT and any related documentation is provided "as is" without warranty of any kind, either express or implied, including, without limitation, the implied warranties or merchantability, fitness for a particular purpose, or non-infringement. The entire risk arising out of use or performance of the SOFTWARE PRODUCT remains with you.

NO LIABILITY FOR CONSEQUENTIAL DAMAGES. In no event shall DesignSoft or its suppliers be liable for any damages whatsoever (including, without limitation, damages for loss of business profits, business interruption, loss of business information, or any other pecuniary loss) arising out of the use of or inability to use this DesignSoft product, even if DesignSoft has been advised of the possibility of such damages. Because some states/jurisdictions do not allow the exclusion or limitation of liability for consequential or incidental damages, the above limitation may not apply to you.

MISCELLANEOUS

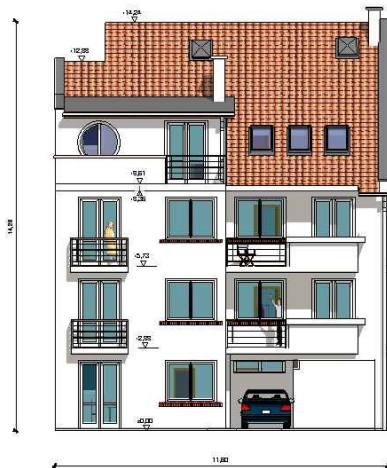
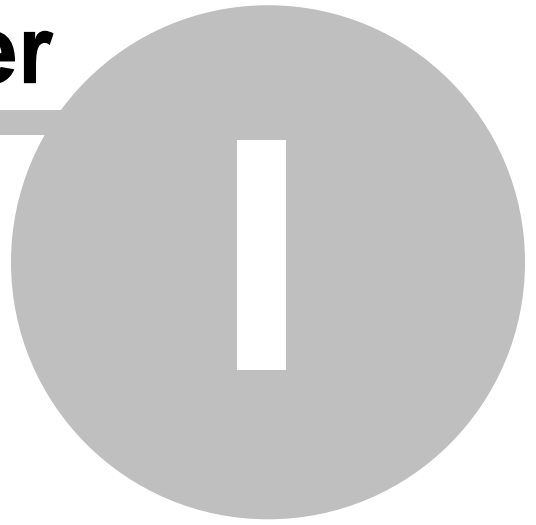
Should you have any questions concerning this Agreement, or if you desire to contact DesignSoft for any reason, submit your question at www.designsoftware.com under Technical Support or please write to:

DesignSoft


Table of Contents

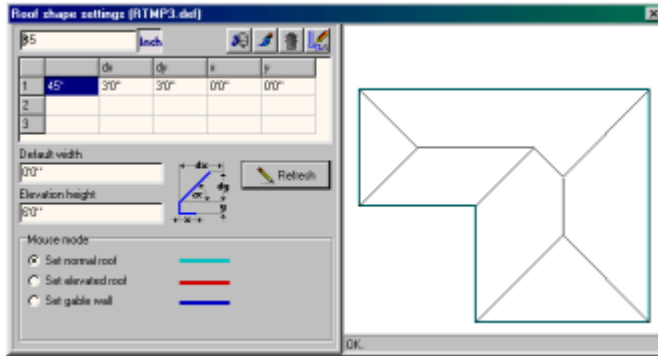
	0
Chapter I Quick automatic roof designer	6
Index	9

Chapter



1 Quick automatic roof designer

You can start this function by clicking the  icon in the floorplan editor. If you start making a new roof, after pressing the icon you have to define a roof contour in the floorplan editor. You can do this by using the mouse. To close the contour either double-click or click to the first point of the contour. You can edit an existing roof by selecting it, and clicking to the icon. The appearing dialog:



The elements of the dialog:



Switch between cm and inch measure units.



The function clears the definition field and the roof parameters.



You can set the surface properties of the roof.

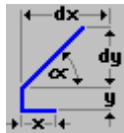


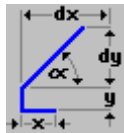
Quit editing, erase the roof and return to the floorplan editor.



Save the roof and return to the floorplan editor.

In the definition field, the program defines a series of sections in one line as shown in the



icon. The  icon shows a cross-section of the roof as if we looked at it parallel with the wall.

The data definitions are as follows:

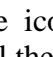
X horizontal overhang

Y vertical elevation

Alpha degree of the sloping ledge

dx length of the sloping ledge in the x direction

dy length of the sloping ledge in the y direction

In one line you can see a definition of a series of sections shown in the  icon. The roof can be built up by the side of these ledges as intersections of planes. To all the roofedge-contours, a definition must be assigned, which can be

- normal roof setting
- elevated roof or

- gable end.

A rising roof edge can be composed of three successive sections as shown in the icon. In each line, the X, Y values can be entered or omitted. The degree, the value of dx, dy are interdependent on each other. When entering values, you can choose which two values of the three you know and wish to enter, and the program will calculate the required third value. If you wish the program to calculate that required value, then you need to fill in the other two and after entering the third field, clear that (use Delete or Backspace keys) and hit the Enter key. The program will calculate the new value and write it in the field.

Comment: When you use this calculating method, some rounding inaccuracy may take place. The elemental values are the dx, dy values. The value of alpha helps you to fill in the definition field and is only used for reference value.

The field for entering elevation height: The roofedge-contour starts higher by the value entered here. In order to be exact, the roof contour is considered 0 base level and the value you enter is offset vertically from this 0 base. This value is used for those roof contour sides which are set elevated roof (see later).

The field for entering default width: The roofedge-contour starts further out from the wall perimeter by the value entered here. Using this function, you can get a larger eave overhangs.

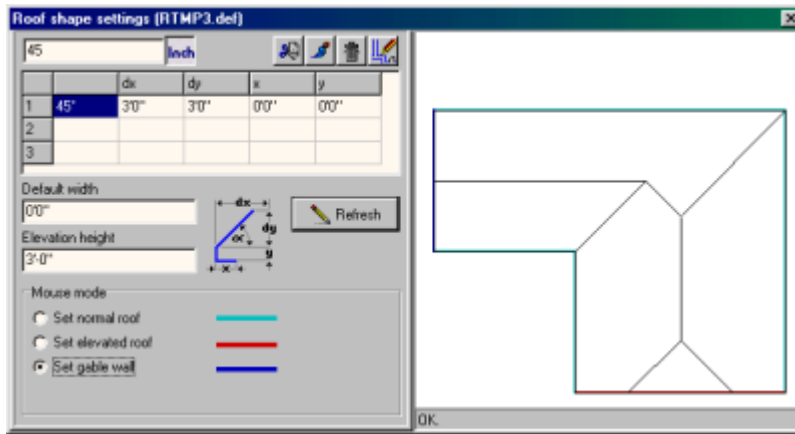
The **Refresh** button updates the top-view picture of the roof. However, pressing the button is not always necessary because pressing the Enter key after entering any roof parameters has the same effect.

You can customize the roof by using the three different roof defining types:

- normal roof ,
- elevated roof or
- gable end.

For each side of the roof contour, one of these types are assigned. To assign a type to a roof contour side choose the type with the buttons and click on a roof contour side on the top view picture of the roof.

Use Normal roof setting for the sides on which the roof is not elevated. Using elevated roof will shift up the roof planes by the value entered at Elevation height. Choosing Gable wall setting will result in a vertical cutting of the roof at the specified sides. The three types are shown with different colours on the top view roof contour.



Index

- A -

Automatic roof designing 6

- Q -

Quick automatic roof designer 6